

Application

Residential - Cotswolds



Private Residence - Cotswold Stone House



Specification

Located in a sleepy Gloucestershire hamlet, this handsome Cotswold stone house has been substantially updated, extended and modernised to very high standards of both traditional craftsmanship & modern technology.

The brief for the project was to create an automated lighting control system that would not only offer one touch button scene-setting controls, but would be sympathetic to the building & also intuitive to weekend guests. The highly flexible nature of eDIN allows control of the open plan areas and individual rooms including blind controls and whole house commands for welcome and exit settings, party modes etc. Lighting and blinds are controlled by either the iCON keypads with their custom engraved buttons located at regular switch positions or by the wireless control system which can be accessed by web browser or a handy iOS or Android App. A selection of conventional switches, single gang push button control plates and double gang sized control plates, were used to operate the lighting and blinds throughout the house.

Client Benefits

With an eDIN system installed, features not used initially can be programmed in later to allow the control system to adapt with the changing use of the property as lifestyles change, demand for energy efficiency and energy savings increase. Features available to the home owner include further integration with AV equipment, automated control to mimic occupation, security interfacing, control of colour changing fixtures and more.

Key Features

- » Flexible load types
- » Astronomical time clock scheduling
- » Integration capabilities
- » UK design and manufacture
- » Pre and after sales support
- » Evolution and eDIN products as main controllers
- » Mode CC Mains Dimmable Drivers used for all downlights
- » App control with iOS or Android
- » 2 year warranty



Integration

Having the Network Processor with its integral Astronomical Time Clock at the centre of the eDIN control system not only allows for numerous control scenarios & scheduling of various lighting scenes, but can also allow for varying button functions depending upon time of day. It also allows for connection to a WI-FI Router via an Ethernet cable & also further networking via its RS232 connection allowing the use of TELNET commands to integrate with AV systems.

Products Used



iCON Control Plate ICN-SGP-55

Scene selection is achieved via an elegant pushbutton plate. The ICON control plate utilises black or white rectangular push buttons that are available in a range of standard icons or that can be custom laser engraved with text, icon or language. The text on each button is backlit with an RGB LED that is also programmable for colour and brightness.



eDIN Modules DIN-PSU-24V, DIN-02-08, DIN-INT-00-08, DIN-MSR-05-04

eDIN is designed to meet the demanding requirements of systems integrators, residential developers and designers alike in a simple, flexible, cost-effective system with a modular, DIN rail mounting, form-factor.

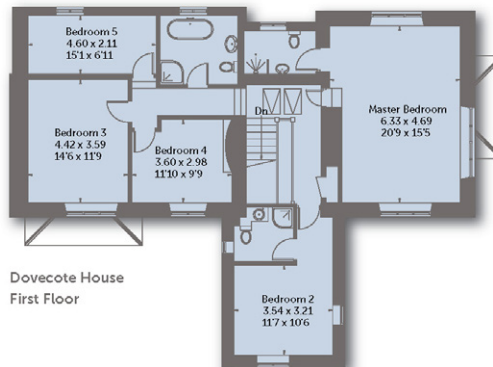
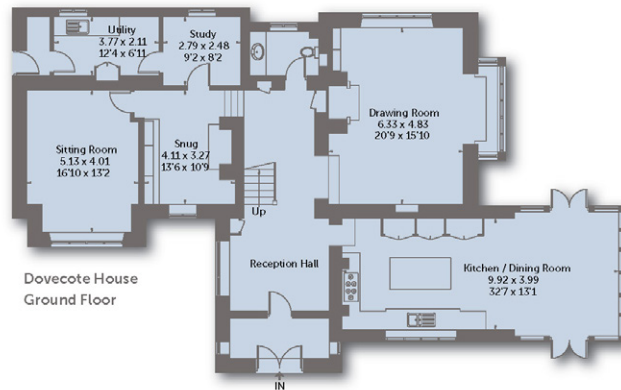
Aimed at both commercial and residential projects, eDIN is easy to specify, install and commission, bringing intelligent lighting control within reach of small and medium sized projects. eDIN can be used in two ways: either providing multi-room, multi-scene lighting and blind control, optionally integrated with a multi-media system, or for small systems (up to eight channels) in a stand-alone mode.



eDIN Modules DIN-NPU-00-01

System processor for multi-room control with Ethernet and RS232 connectivity. The DIN-NPU module has the commissioning software built in that can be accessed through a web browser. This feature enables the eDIN system to be commissioned and controlled wirelessly via a tablets web browser. Applications for iOS and Android smart phone devices provide simple and intuitive control for the end user, allowing simple scene selection and adjustment.

Wiring Overview / Diagram



Please scan for more information



Mode Lighting Limited
 The Maltings, 63 High Street, Ware, Hertfordshire, SG12 9AD, United Kingdom
 Telephone: +44 (0) 1920 462 121 Facsimile: +44 (0) 1920 466 881
 email: sales@modlighting.com or visit us online www.modlighting.com