



## SET-SEN-PROG-01



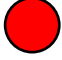

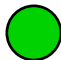

### Description

The SET-SEN-PROG-01 is a handheld infrared programmer complete with LCD screen for use with the SensorLite range of multi-sensors.

The SET-SEN-PROG-01 can be programmed for the settings and configurations required and stored in the non-volatile memory then these settings are then available to be sent to the multi-sensor via an infrared signal.

The SET-SEN-PROG-01 can store and save up to 3 recallable programs within the non-volatile memory for easy one touch commissioning or multiple sensors.

### Button definitions

Item 	Select 	Send 	Store 	Plus 	Menu 
Scroll Menu	Select or change setting	ON/Send Program	Save/store settings	Increase value	Menu selection

### Pre-loaded customer recall programs

The SET-SEN-PROG-01 is supplied with 3 pre-loaded common programs. These settings can be edited and overwritten by the user with the Customer Save feature.

Customer recall number	Operation Mode	Settings
cr.1	Presence detection Daylight linking dimming DALI output	Occupancy time out- 10 minutes Light level- 400 LUX Sensitivity- 4 (Medium)
cr.2	Presence detection Daylight linking dimming DSI output	Occupancy time out- 10 minutes Light level- 400 LUX Sensitivity- 4 (Medium)
cr.3	Presence detection Daylight linking dimming Analogue 1-10V output	Occupancy time out- 10 minutes Light level- 400 LUX Sensitivity- 4 (Medium)

## Operation of Daylight Linking Dimming

**Daylight linking dimming** is for use with High Frequency fluorescent ballasts or LED drivers that operate using either DALI, DSI or 1-10V Analogue control protocols. The light output regulates (dims up and dims down) based on the natural daylight ingress into the space under control and the reflective light level from the working plane that falls on to the face sensor to maintain a constant light level.

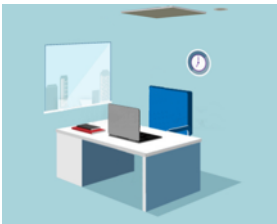
### Example Daylight linking dimming



Presence detected, low level of natural daylight ingress, high output from artificial light source, tracking daylight



Presence detected, high level of natural daylight ingress, low output from artificial light source, tracking daylight



No occupancy, light output OFF, if set to Dim to OFF



No occupancy, artificial light output at Low level, if set to Dim to Min and Hold

## Operation of Daylight Switching

**Daylight Switching** is for use with with Non-Dimmable lighting loads. The lighting load is switched ON or OFF based on the natural daylight ingress into the space under control and the reflective light level from the working plane that falls on the sensor.

### Example of Daylight Switching



Presence detected, low level of natural daylight ingress, artificial light source is ON.



Presence detected, high level of natural daylight ingress, artificial light source is OFF



No occupancy, light output OFF

## SensorLite Operation Modes

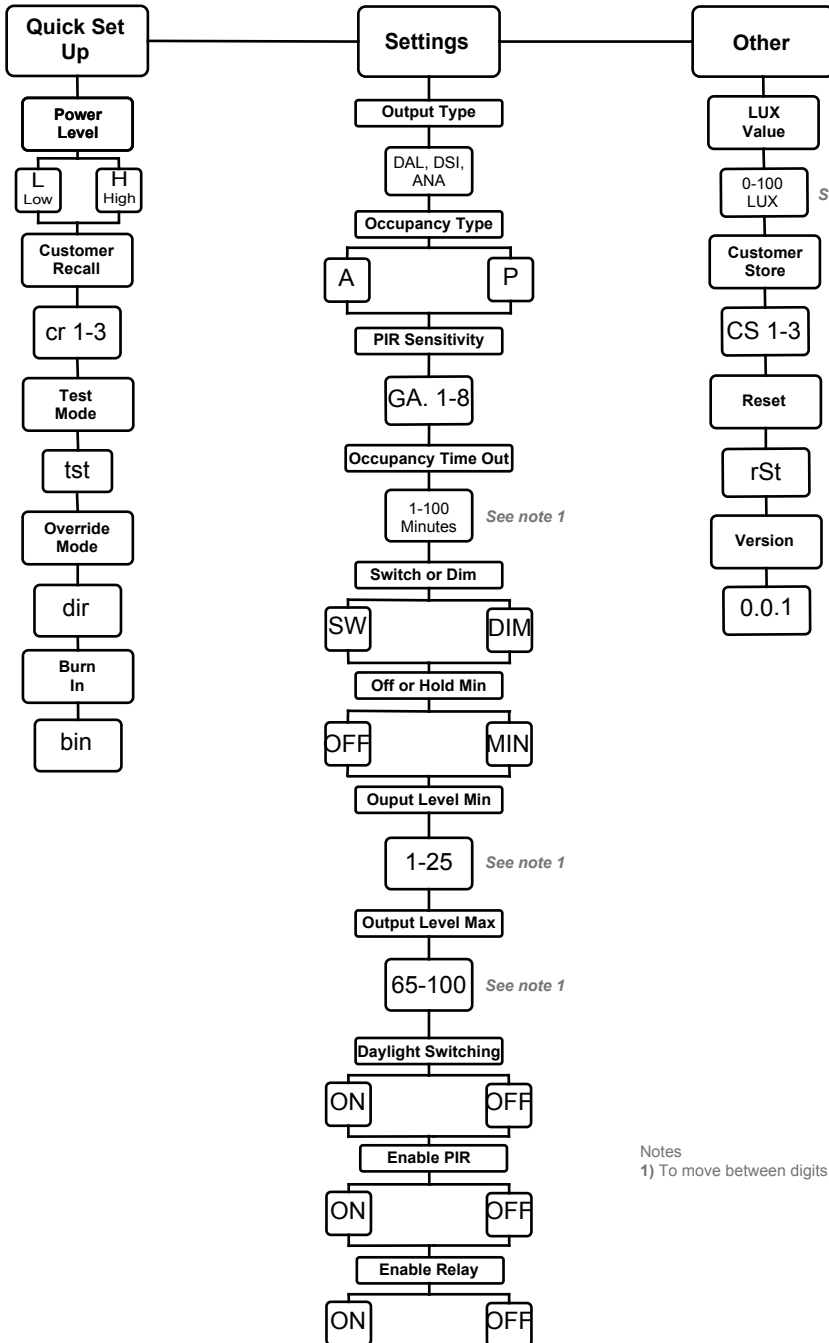
Mode number	Operational mode	Enable PIR	Occupancy type	Switch or DIM	Daylight switching
1	PIR Presence detection and daylight linking dimming	ON	Presence	DIM	OFF
2	PIR Absence detection and daylight linking dimming	ON	Absence	DIM	OFF
3	PIR Presence detection and daylight switching	ON	Presence	Switch	ON
4	PIR Absence detection and daylight switching	ON	Absence	Switch	ON
5	PIR Presence detection only	ON	Presence	Switch	OFF
6	PIR Absence detection only	ON	Absence	Switch	OFF
7	Daylight Linking dimming photo-cell only	OFF	N/A	DIM	OFF
8	Daylight Switching photo-cell only	OFF	N/A	Switch	ON
9	Manual impulse dimmer	OFF	N/A	Switch	OFF

## Using your SET-SEN-PROG-01

- ◆ Switch ON the PROG-01 by pressing the ON/SEND button.
- ◆ Select the Menu type (Quick Set Up or Settings or Other) each press will move through the options.
- ◆ Pressing MENU at any time will move between the Menu types.
- ◆ The LCD screen will display the 1st selectable options- Power Level- Output Type- LUX Value.
- ◆ To move down the Menu Tree press the ITEM button, each press will move down a level.
- ◆ To change the selection or setting that is displayed on the LCD screen press SELECT, each press will move through the options.
- ◆ The current setting will flash.
- ◆ To change the value (number) that is displayed on the LCD screen press PLUS, each press will increase the number.
- ◆ Where a number has more than 1 digit, press SELECT to move through the digits. The decimal point will move to indicate the changeable number.
- ◆ Once you have made the changes or programmed the SET-PROG-01 with the desired settings pressing SEND whilst directing the SET-SEN-PROG-01 at the sensor will send the program to the sensor.
- ◆ Sending the program can be carried out at any time during the above process.
- ◆ To program other sensors with the same settings, repeat the sending process- Point and SEND.
- ◆ The Bi-colour LED in the sensor will flash 4 times to indicate the program/settings have been received

# Menu Tree

Pressing the Menu button will scroll between the Quick Set Up Menu, Settings Menu and Other Menu.



See note 1

See note 1

See note 1

See note 1

Notes  
1) To move between digits press select

# Glossary

Item	Description
Power Level- OPL	Power level of the infrared signal. High (H): up to 16 metres. Low (L): up to 6 metres Using High power output will use up extra battery life of the SET-SEN-PROG-01
Customer Recall- cr1-3	Recalls the saved settings within the SET-SEN-PROG-01 from Customer Store 1-3
Test Mode- tst	Walk test mode, reducing the occupancy time out setting to 10 seconds. Press Send to toggle between Test and Normal Mode. Automatically times out after 4 minutes.
Direct Override- dir	Testing function: In Presence Mode the output will be dimmed Up and Down. In Absence Mode the output will be switched ON and OFF
Burn In- bin	Sets the sensor to a maximum output (100%) for 100 hours continuously. (Refer to lamp manufacturers data sheet for burn in details)
Output Type	Selects the output dimming signal to either DALI, DSI or 1-10V
Occupancy Type	Selects Absence or Presence detection occupancy modes.
PIR Sensitivity	Adjusts the PIR sensitivity from 1 (minimum) to 8 (maximum).
Occupancy Time Out	Selects the time out period (in minutes) the lights will Dim to OFF or DIM and Hold after occupancy ceases. If Non-Dimmable loads then switch OFF.
Switch or Dim	Selects Switching (SW) operation for Non-Dimmable loads or Dimming (DIM) operation for Dimmable control output loads (DALI, DSI, 1-10V).
Dim to OFF or Dim and Hold	Selects the after occupancy operation. Either Dim to OFF or Dim to a low level and hold continuously.
Minimum Output Level	Selects the minimum dimmed output level from 1% to 25%. Select from 1,3,5,10,15,20,25%. This is the minimum level the lights will Dim down to.
Maximum Output Level	Selects the maximum dimmed output level from 65% to 100% in 5% increments. This is the maximum output level the lights will Dim up to.
Daylight Switching	Enable or Disable the photocell's operation.
Enable PIR	Enable or Disable the PIR's operation.
Enable Relay	Enable or Disable the internal relay. When enabled the relay will open and close with the Dimming control signal.
Light output level	Selects the desired light level to regulate the dimming output to maintain a constant light (daylight linking dimming), applicable if DALI, DSI or 1-10V loads.  Selects the desired light level to switch ON/OFF (daylight switching), applicable for Non-Dimmable loads.  Divide desired LUX level by 10 and enter value into SET-SEN-PROG-01 Example to achieve 400 LUX, divide 400 by 10 = 40. Enter 40 into programmer.
Customer Store- CS.1-3	Saves the current settings to be recalled using the Customer Recall feature. Up to 3 unique settings can be saved. Press Enter to store on appropriate number.
Reset- rSt	To reset the SET-SEN-PROG-01 to factory default settings. Press Enter to reset all settings.
Version	Displays the firmware version number of SET-SEN-PROG-01

This page is intentionally left blank

## Technical Data.

**Compatible with:** SensorLite product range

**Battery:** 9V PP3. Yellow LED shows when battery low (supplied).

**Automatic turn off :** After 4:00 minutes.

**Infrared angle:** 60°

**Range:** High power output = up to 16 meters. Low power output = up to 6 meters.

**Dimensions:** 90mm x 61mm x 22mm.

**Material:** Flame retardant ABS.

**Colour:** Black

**Weight:** 94 grams incl. battery

**I.P. Rating:** IP50.

**Operating Temperature:** 0-40°C.

### WARNING

This product contains electronic devices.

Do not perform any high voltage tests on this product or to any equipment connected to it. Mains connections can be high voltage tested in accordance with BS 7671:2008, IET Wiring Regulations 17th Edition section 612.3.3.

The SET-SEN-PROG-01 is part of a range of energy conservation products available from Setsquare.




### WEEE Directive.


Electrical and electronic equipment should never be disposed of with general domestic or commercial waste but collected for their proper treatment and recovery. The crossed out wheellie bin symbol is to remind you of the need to dispose of this product at the end of its life in a way that will assist in the recovery, recycling and reuse of many of the materials used in this product. Where possible also recycle the packaging.




Setsquare Energy Saving Controls  
The Maltings  
63 High Street  
Ware  
Hertfordshire  
SG12 9AD  
United Kingdom



 01920 462121

 01920 466881

 [sales@modelighting.com](mailto:sales@modelighting.com)

 [www.setsquare.com](http://www.setsquare.com)

SET-SEN-PROG-01 User Guide 19/04/2016  
DS472 V1.0