

# System Accessories



CONTROLLING THE FUTURE OF LIGHTING



## Key Features

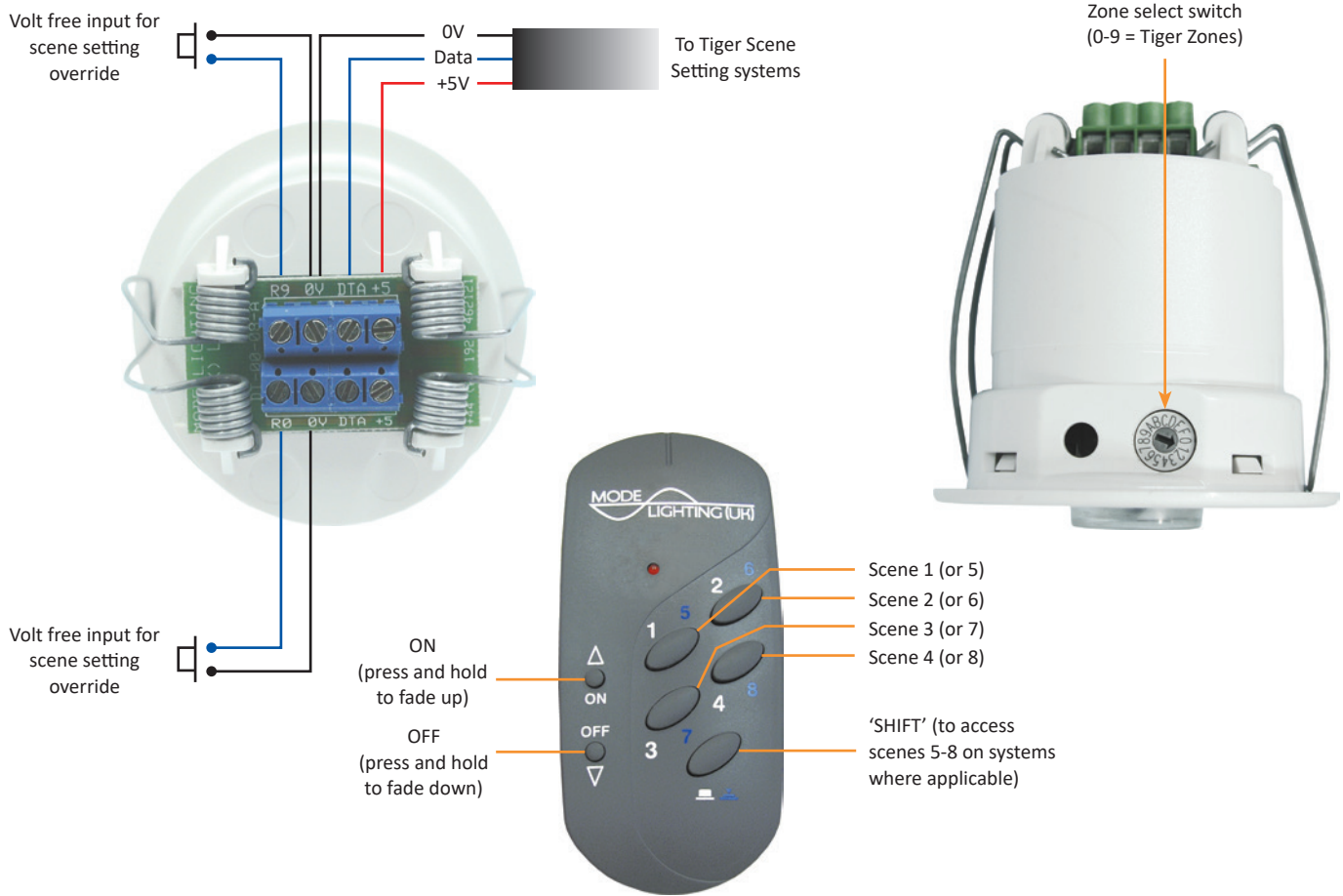
- » Four/Eight Scene, ON/OFF and Scene FADE UP/DOWN control.
- » Zone select switch.
- » Discrete ceiling mounting detector.
- » Small, lightweight Infrared handset.
- » Partition input facility.
- » Remote ON/OFF inputs.
- » Complies with EC EMC and Low Voltage Directives (CE).
- » 2 year warranty.



The Tiger DT-00-08 adds Infrared control capability to Tiger Scene Setting systems providing access to the scenes, ON/OFF and RAISE/LOWER control from the remote handset IR-00-08.



### System Architecture



### Technical Data

Power	DT-00-08	IR-00-08
Batteries	» N/A	» 2 x AAA 1.5V (supplied)
<b>Connections &amp; Cable Specifications</b>		
Operating Range	» N/A	» Typically 10m maximum
Protocol	» Tiger Scene Setting	» 40KHz Infrared
Operates	» Tiger Systems » Legacy products (Scenario) (Octet) (Quartet) (SolitairePlus)	» DT-00-08. Also works with EVO-RP-03-02, MBUS-MSENS, SCE-02-04-LED and Legacy products (CTR DT-00-08, SCE-02-04, SCE-02-02)
<b>Mechanical</b>		
Connection	» Screw terminals	» N/A
Dimensions	» 75mm High x 70mm Wide (cutout 60mm diameter)	» 120mm High x 55mm Wide x 25mm Deep
Mounting	» Spring clip for ceiling mount	» N/A
Colour	» White	» Charcoal

Installation should be in accordance with the relevant National Wiring Regulations and other applicable Regulations. Compliance to EC EMC and Low Voltage Directives may be invalidated if not used or installed according to the published specification. DT-00-08/IR-00-08 should be located in well ventilated areas and should not be covered or enclosed by insulating materials. Mode reserve the right to amend the product specification or design at any time and without notice.



Mode Lighting Limited. The Maltings, 63 High Street, Ware, Hertfordshire, SG12 9AD. United Kingdom.  
 Tel: +44 (0) 1920 462121 | Fax: +44 (0) 1920 466881 | Email: sales@modelightning.com | www.modelightning.com