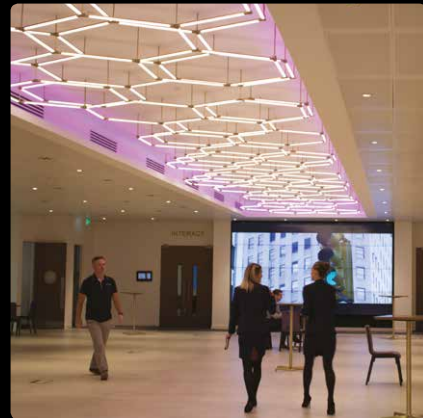




MODE LIGHTING APPLICATIONS

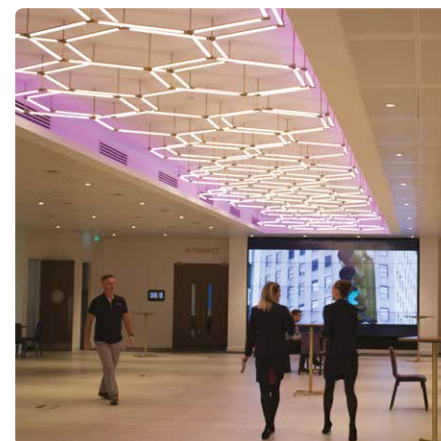


With thanks to the Designers and Clients who have supported us on these projects:-
Hoare Lea, Stuart Padwick, Foto-Ma, Colin Mitchell, GIA Equation, ME Engineers, The RFU, Studio Lumen



MODE LIGHTING

A long established ethos of technical support and product development has resulted in a product range suited to a diverse range of applications... some of which are detailed here.



EVENT HALL

ETC VENUES **UK**



1

THE PROJECT

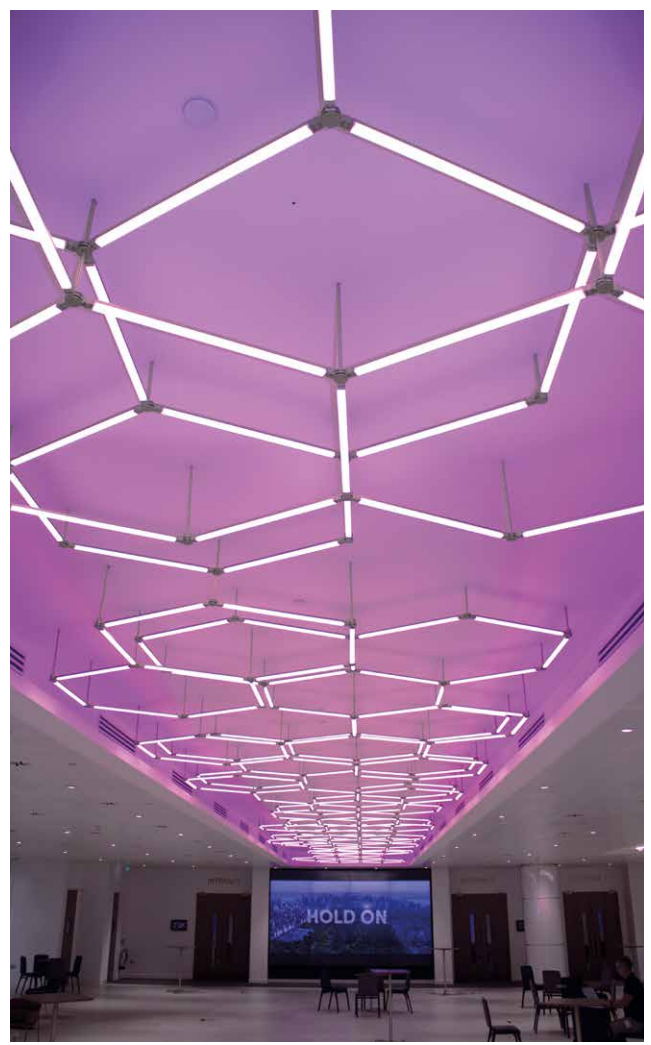
Located in the City of London, this stylish venue has three function suites and can accommodate up to 600 people in a single space. 133 Houndsditch provides an elegant backdrop for conferences and exhibitions, with vibrant interior design and state-of-the-art technology.

PRODUCTS USED:

iCON
eDIN+

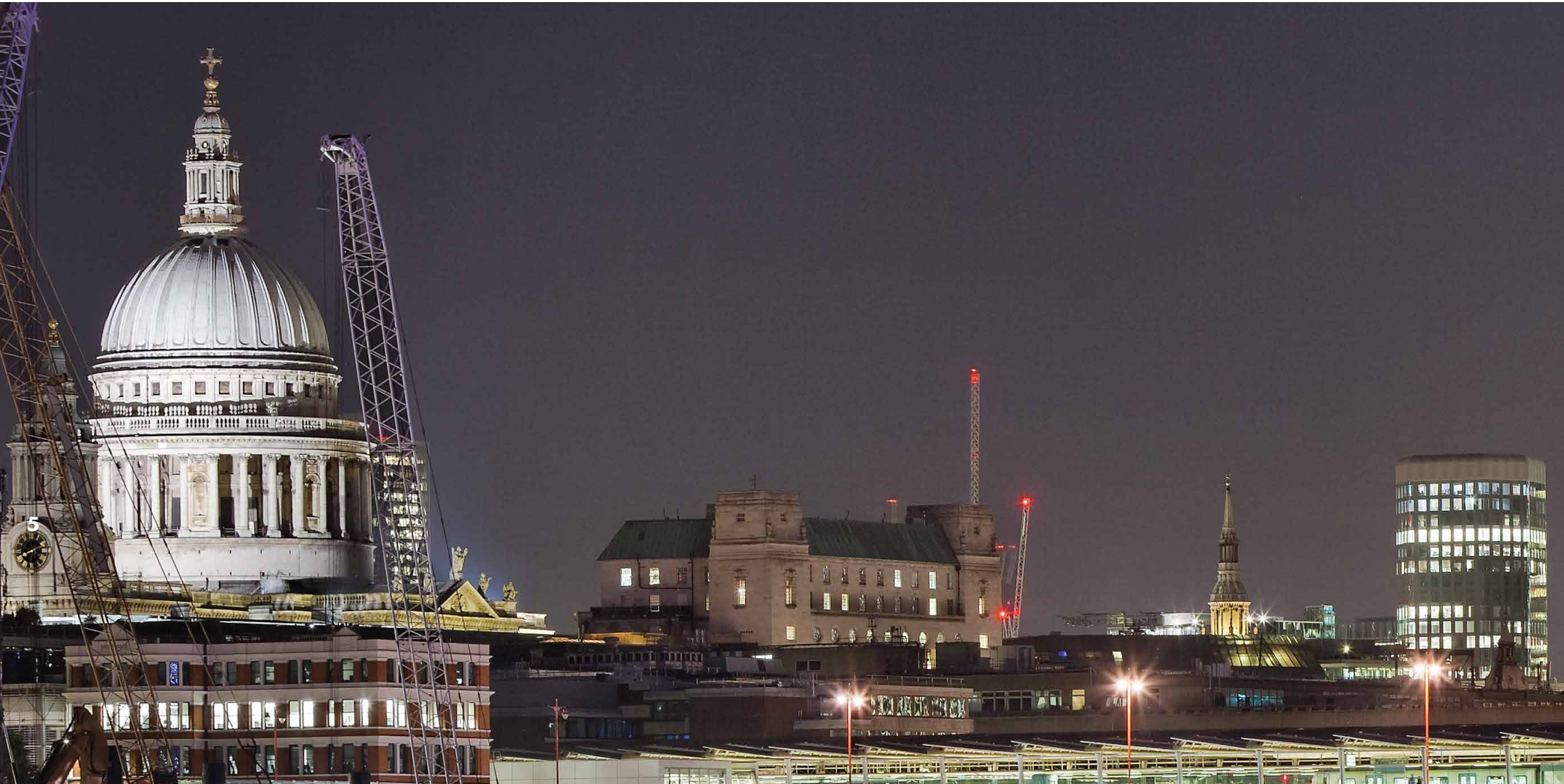






SCULPTURE

HEAD ABOVE WATER **UK**



THE PROJECT

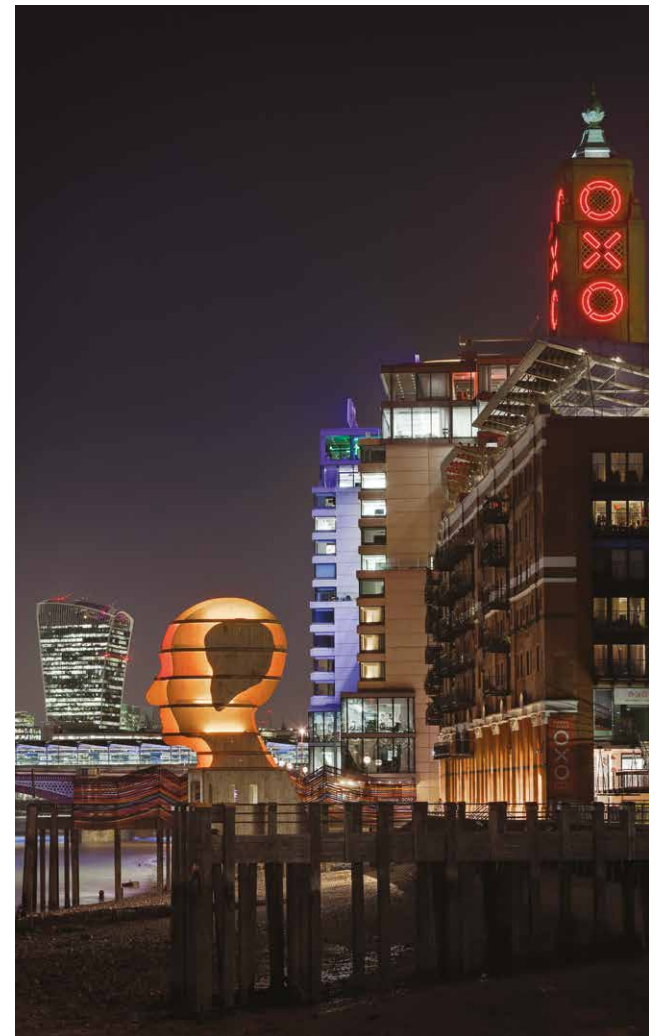
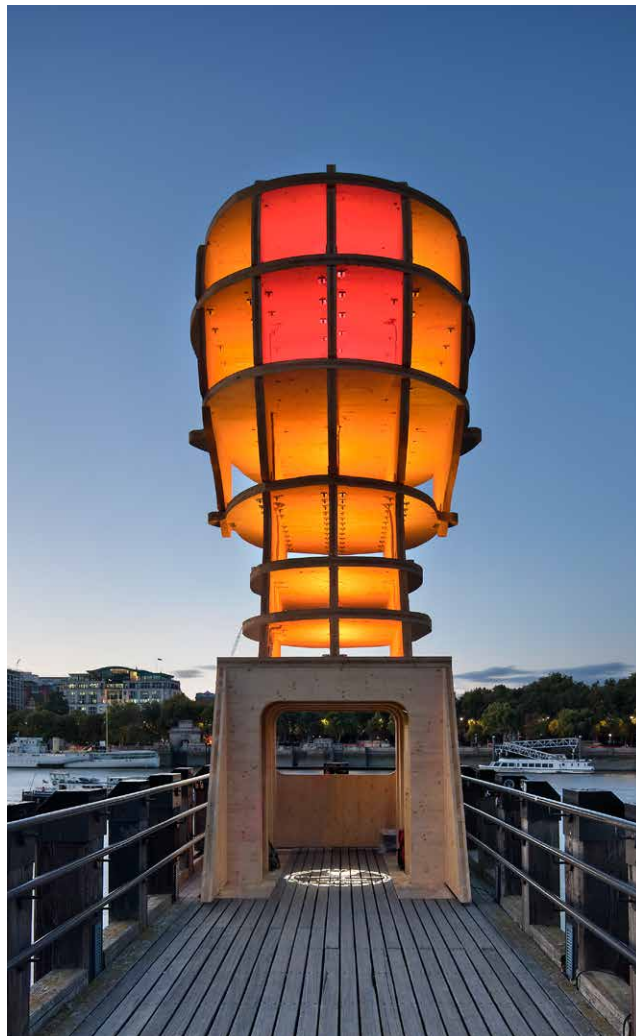
Head Above Water was a breathtaking, 9 metre high sculpture by British designer/sculptor, Steuart Padwick. Making a dramatic change to the London skyline, and with panoramic views of St Pauls and the iconic city skyline, as part of the designjunction festival.

It stood as a symbol of hope, bravery, compassion and positivity in support of Time to Change's campaign to remove the stigma of mental illness.

PRODUCTS USED:
COLOURSTYLE
eDIN+







RETAIL

DALKEITH COUNTRY PARK **UK**



9

THE PROJECT

Just a few miles from Edinburgh city centre is the Dalkeith Country Park, with thousands of acres to explore. At the heart of the park lies the Restoration Yard store, restaurant and wellbeing lab, renovated from an 18th century stable and courtyard.

The Restoration Yard within Dalkeith Country Park was redeveloped and launched in 2016, and is an experience in itself, where visitors can eat local, shop and relax.

PRODUCTS USED:
**EVO-ELLIPSE
EVOLUTION**







RESIDENTIAL

COTSWOLD STONE HOUSE **UK**



THE PROJECT

Located in a sleepy Gloucestershire hamlet, this handsome Cotswold Stone House has been substantially updated, extended and modernised to very high standards blending traditional craftsmanship and modern technology.

PRODUCTS USED:

iCON

eDIN+

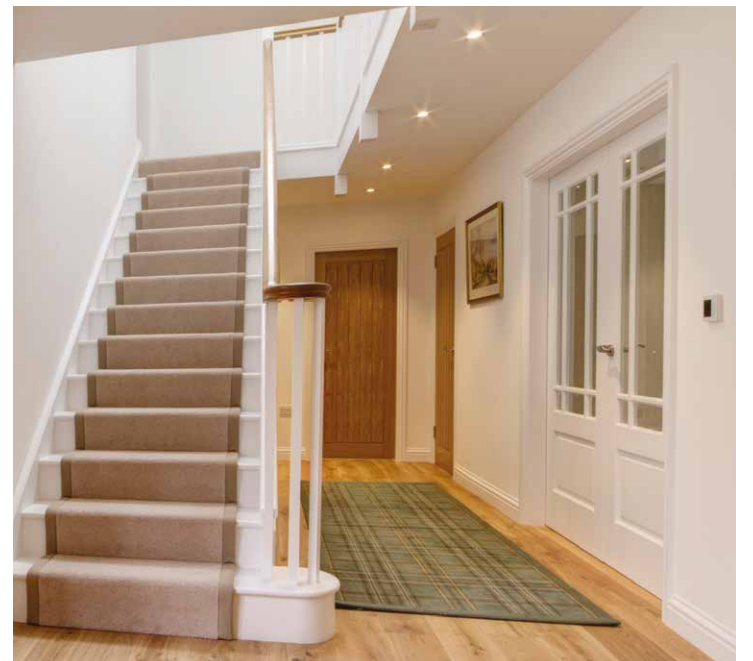
STANDARD **SWITCHES**







16



COTSWOLD STONE HOUSE **UK**

OFFICE

ANGEL BUILDING **UK**



17

THE PROJECT

The Angel Building is a commercial development situated in the Clerkenwell district of Islington and is Derwent London's largest redevelopment.

Launched in late 2010, the Angel Building was transformed from an unloved 1980s commercial building into an award-winning development that reached full occupancy within just over a year, and has regenerated the local area.

PRODUCTS USED:
SET SQUARE







HOTEL

TRADERS HOTEL **ABU DHABI**



21

THE PROJECT

Abu Dhabi, the capital of the United Arab Emirates is host to the Traders Hotel, a luxury hotel complex with over 300 rooms and suites. Part of the Shangri-La group it is the only four-star hotel in the city with its very own private beach.

The hotel has exceptional views of the Sheikh Zayed Grand Mosque and rooms designed with comfort and style in mind, making it the ideal destination for either work or leisure.

PRODUCTS USED:

iCON

eDIN+

STANDARD SWITCHES









25

THE PROJECT

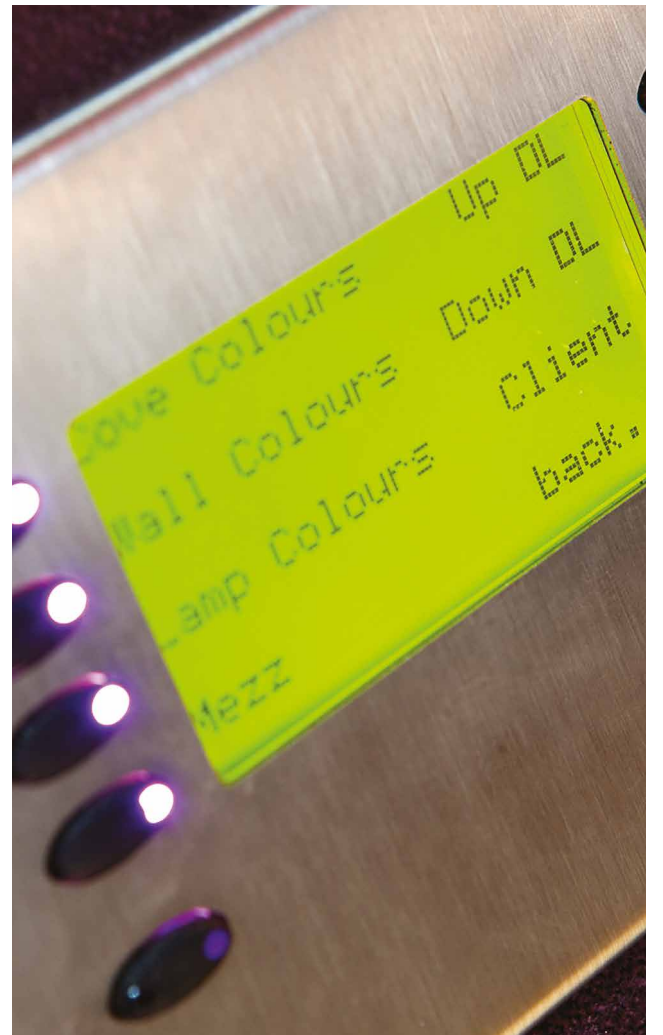
Molinare is a film and broadcast post-production facility located in Soho, London, the heart of the British Film and TV Post Production community. This is the central facility of the Molinare Group, which specialises in grading and digital intermediate, sound, VFX and workflow management.

With over 40 years of experience, Molinare has earned an outstanding reputation for its post-production work, and their passion for film and television is demonstrated through their impressive portfolio of award-winning work.

PRODUCTS USED:
EVO-ELLIPSE
EVOLUTION









29

THE PROJECT

IceBar, the UK's only permanent bar where drinks are served in glasses made of ice!

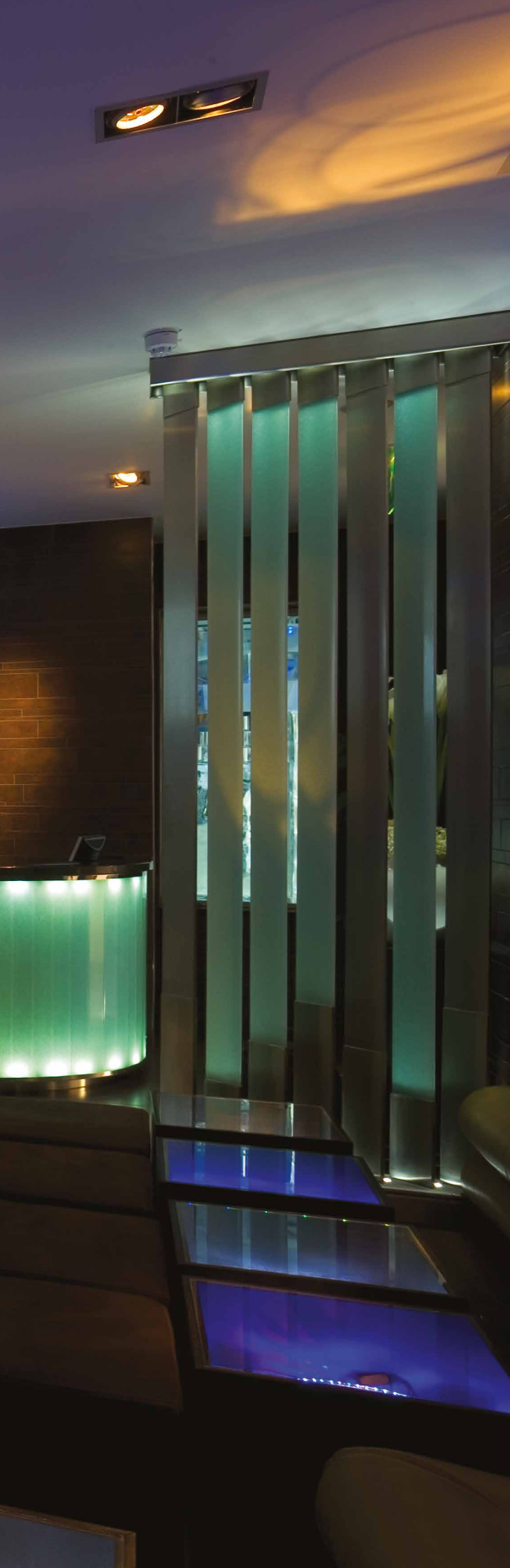
Alongside Firebar and Yuu Kitchen these three venues each bring a different experience to a night out.

PRODUCTS USED:
EVO-ELLIPSE
EVOLUTION





31



STADIUM

TWICKENHAM STADIUM **UK**



33

THE PROJECT

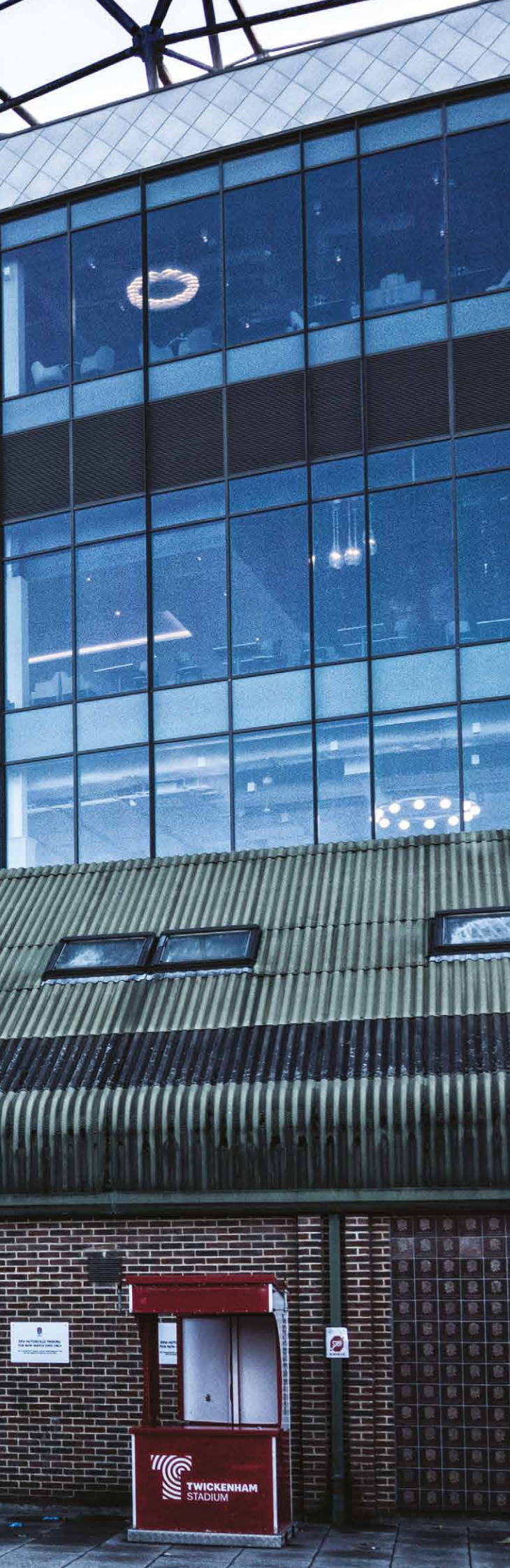
Home of England Rugby, Twickenham Stadium is one of London's top entertainment venues and first opened back in 1909. The stadium, which is owned and operated by the Rugby Football Union (the RFU) is stationed in south-west London and is the second largest stadium in the UK, seating an impressive 82,000.

Twickenham hosts a variety of rugby fixtures and has played host to some of the greatest artists of all time, including Bon Jovi, The Rolling Stones, U2, Rihanna and many more.

PRODUCTS USED:
eDIN+
PIR SENSORS









THE PROJECT

The Pier Arts Centre in Stromness, Orkney was established in 1979 to provide a home for an important collection of British fine art donated by the author, peace activist and philanthropist Margaret Gardiner (1904 – 2005).

'A glowing postmodern shed of dark metal and glass that's both stunningly beautiful – as light spills through it during the day, and glows from it at night – and completely in harmony with the jostling, jumbled line of the old Stromness Waterfront'

- Joyce McMillan, *The Scotsman* June 2007

PRODUCTS USED:
**EVO-ELLIPSE
EVOLUTION**

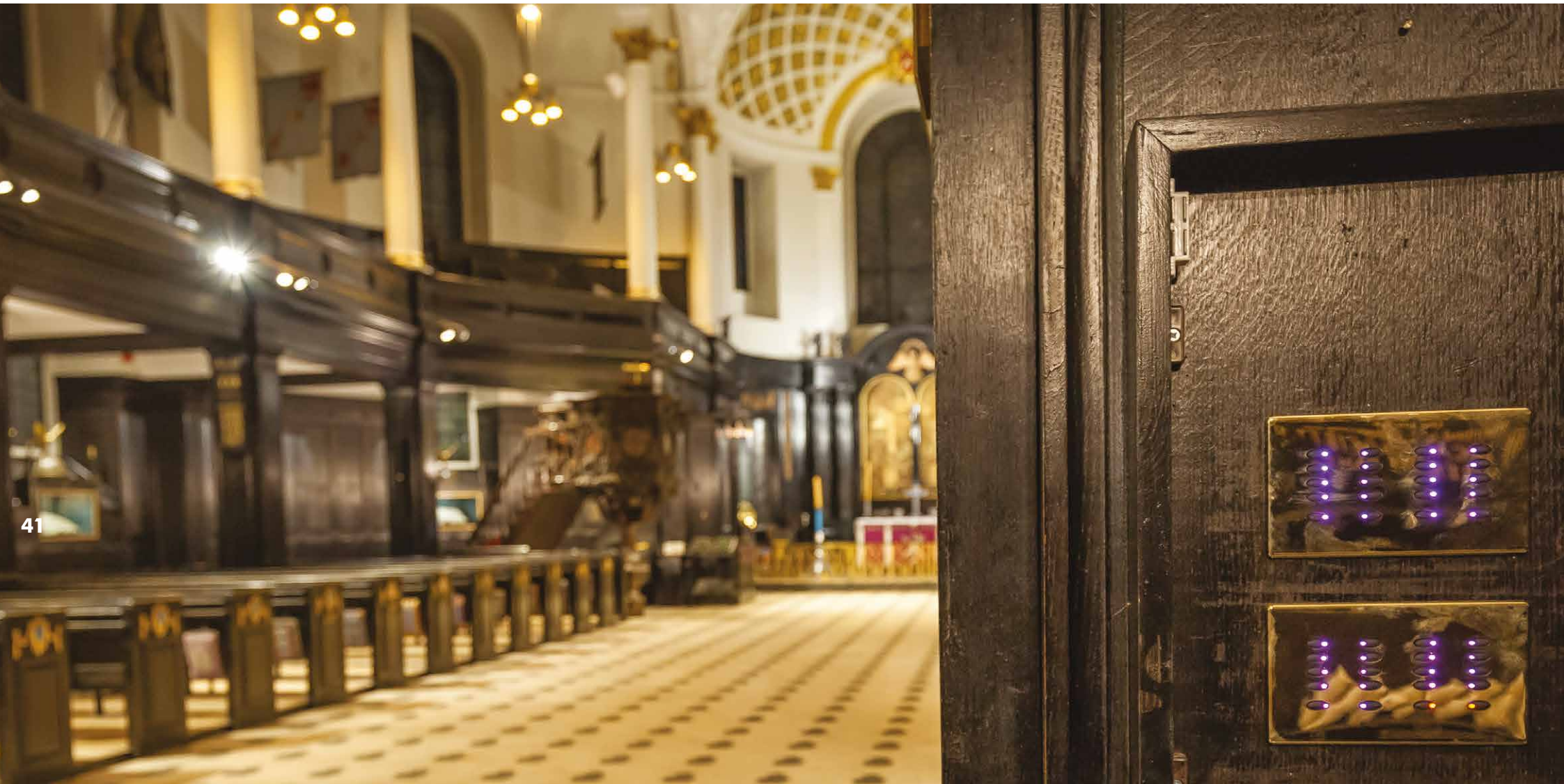






ECCLESIASTICAL

ST' CLEMENT DANES **UK**



41

THE PROJECT

Renowned for the traditional nursery rhyme 'Oranges and Lemons', St' Clement Danes Church is an Anglican memorial church located on the Strand in London.

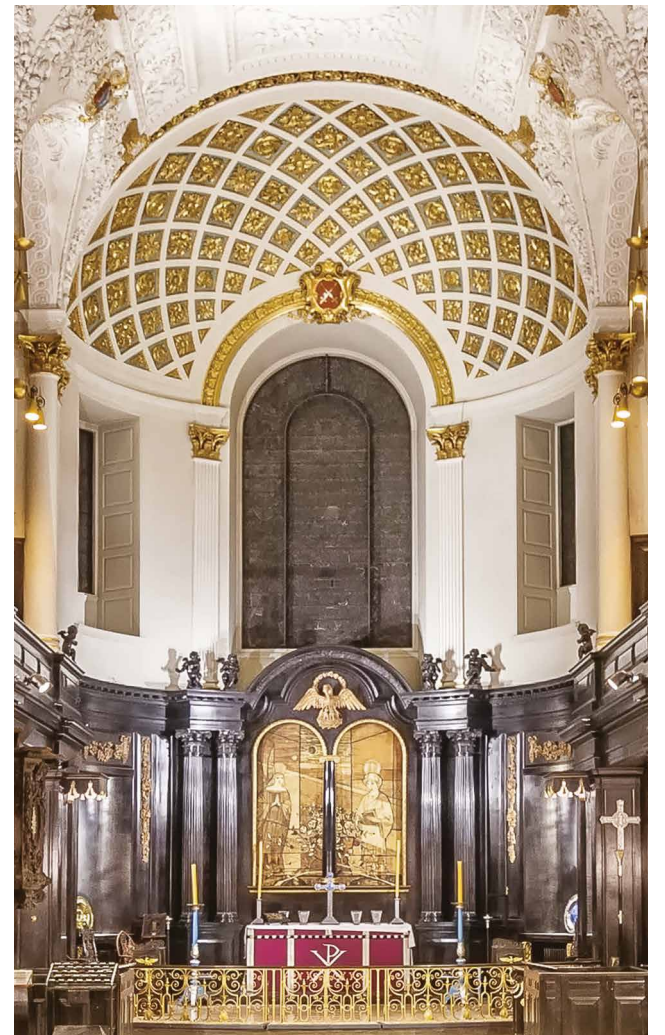
Re-consecrated in 1958 after being damaged in the second world war, the church became the Central Church of the Royal Air Force and a shrine to those who have lost their lives serving in the RAF.

This grade one listed church is positioned right in the centre of London and is known for having one of the best church organs in the capital. St' Clement Danes has a fully maintained set of working bells that still ring the tune of 'Oranges and Lemons' to this day.

PRODUCTS USED:
EVO-ELLIPSE
eDIN+







RESIDENTIAL

BARN CONVERSION **UK**



45

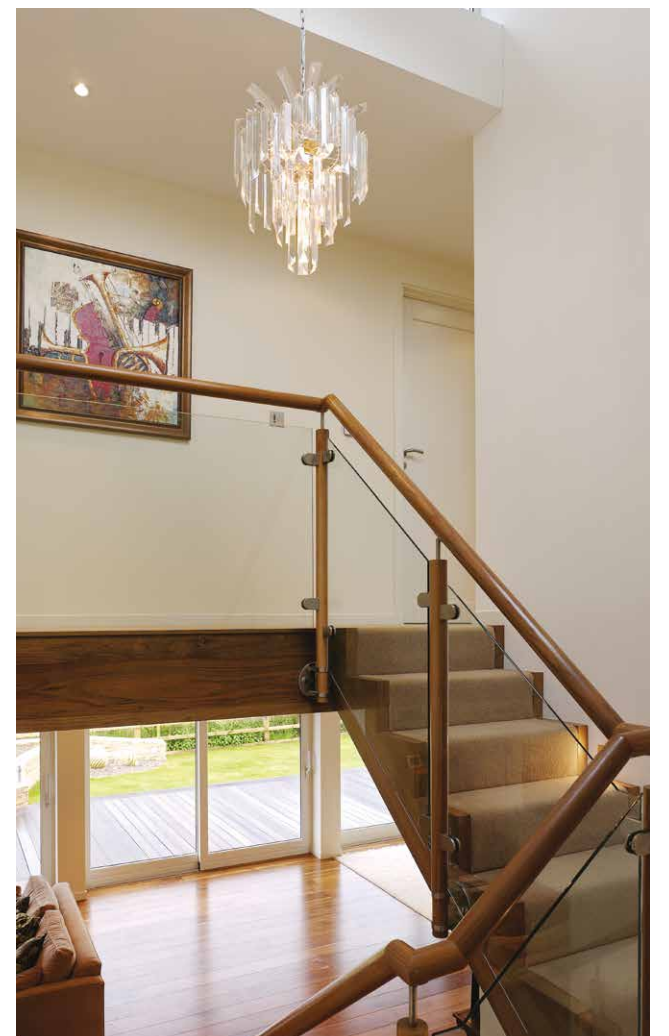
THE PROJECT

Located in a small Oxfordshire village, this radically designed property faced many challenges in bringing together technology and aesthetic features to create a comfortable, practical living environment with stunning green credentials whilst retaining the adventurous nature inspired by the building design.

PRODUCTS USED:
**EVO-ELLIPSE
EVOLUTION
STANDARD SWITCHES**









49

THE PROJECT

Maggie's provides free practical, emotional and social support to people with cancer and their family and friends, following the care originally laid out by Maggie Keswick Jencks.

Built in the grounds of NHS hospitals, Maggie's Centres are places with professional staff on hand to offer the support people need.

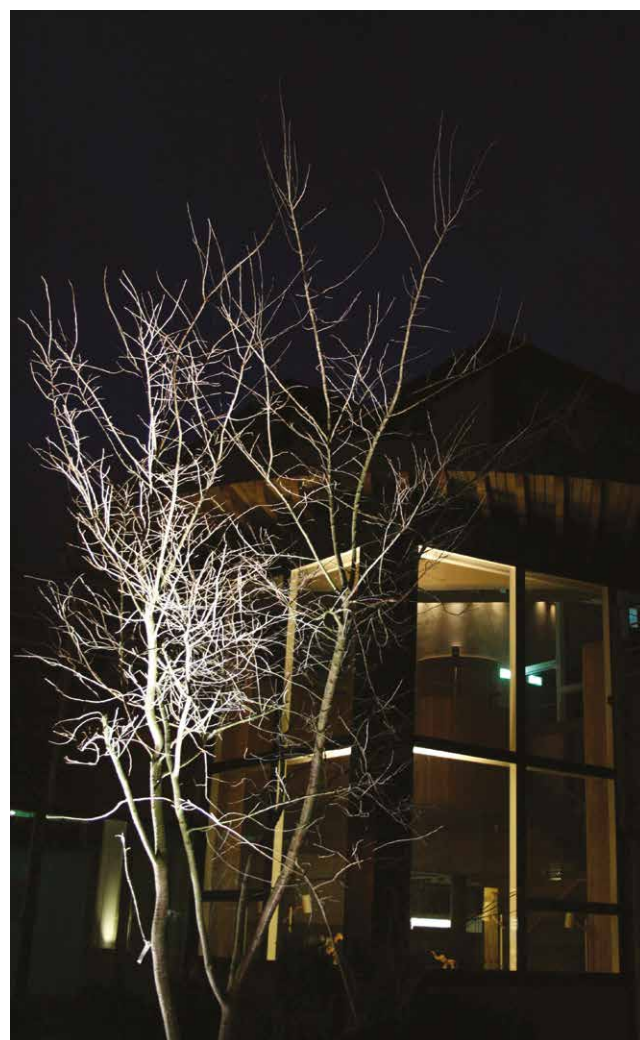
Centres are places to find practical advice about benefits and eating well; places where qualified experts provide emotional support; places to meet other people; places where you can simply sit quietly with a cup of tea.

The first Maggie's Centre opened in Edinburgh in 1996 and since then Maggie's has continued to grow, with 17 Centres at major NHS hospitals in the UK.

PRODUCTS USED:
COOLBRIUM
eDIN+







ARENA

THE O2 ARENA **UK**



THE PROJECT

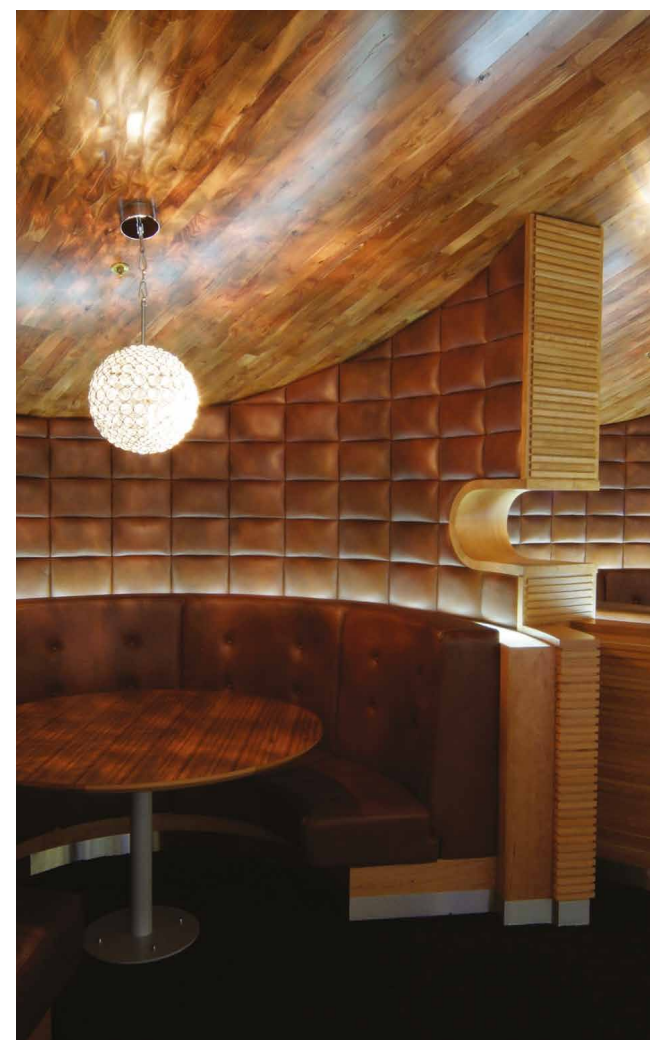
Standing over 50 metres high with a circumference of over 1km, The O2 is the largest purpose-built entertainment venue in Europe, containing multiple music venues, bars, restaurants and a multiplex cinema.

Since its opening, The O2 has hosted some of the world's greatest artists from Bon Jovi, Stevie Wonder and Prince to Take That, Justin Timberlake, Elton John and The Rolling Stones. The arena has also been used for various sporting events, including National Ice Hockey matches and the ATP Tennis Masters, confirming The O2's position as Europe's largest live events venue.

PRODUCTS USED:
EVO-ELLIPSE
eDIN+







RESIDENTIAL

RIVERWALK RESIDENCES **UK**



THE PROJECT

Built in 2016, this unique residential development is home to a collection of luxurious apartments and penthouses with stunning views across London's River Thames.

Adjacent to the Vauxhall Bridge on the Thames, Riverwalk is a curved apartment complex comprising of 116 properties, that were designed with light and space in mind. Riverwalk was designed by Stanton Williams' and was awarded the 2019 Westminster Society Award.

PRODUCTS USED:

iCON

eDIN+

STANDARD SWITCHES







