

# OSLO

## Rotary Controls



DIN-RD-00-04



DIN-RD-00-03



DIN-RD-00-02



DIN-RD-00-01

### Key Features

- ▶ 1, 2, 3 and 4 way options as standard
- ▶ Fully configurable operation
- ▶ Raise/Lower scene or channel function
- ▶ Colour or Tuneable White adjustment
- ▶ Separate push button on each rotary
- ▶ Connects on standard Keypad bus wiring
- ▶ Multi-position control capability
- ▶ Custom plate formats and finishes available
- ▶ Complies with EC EMC and Low Voltage Directives (CE UKCA)
- ▶ 2 year warranty

Oslo from Mode Lighting offer the user a very simple, instantly understandable control format. Applications include hotel rooms, meeting rooms and residential projects where integration and scene setting are desired with the added benefit of simple wall plate control familiar to any client.



HUE



SATURATION



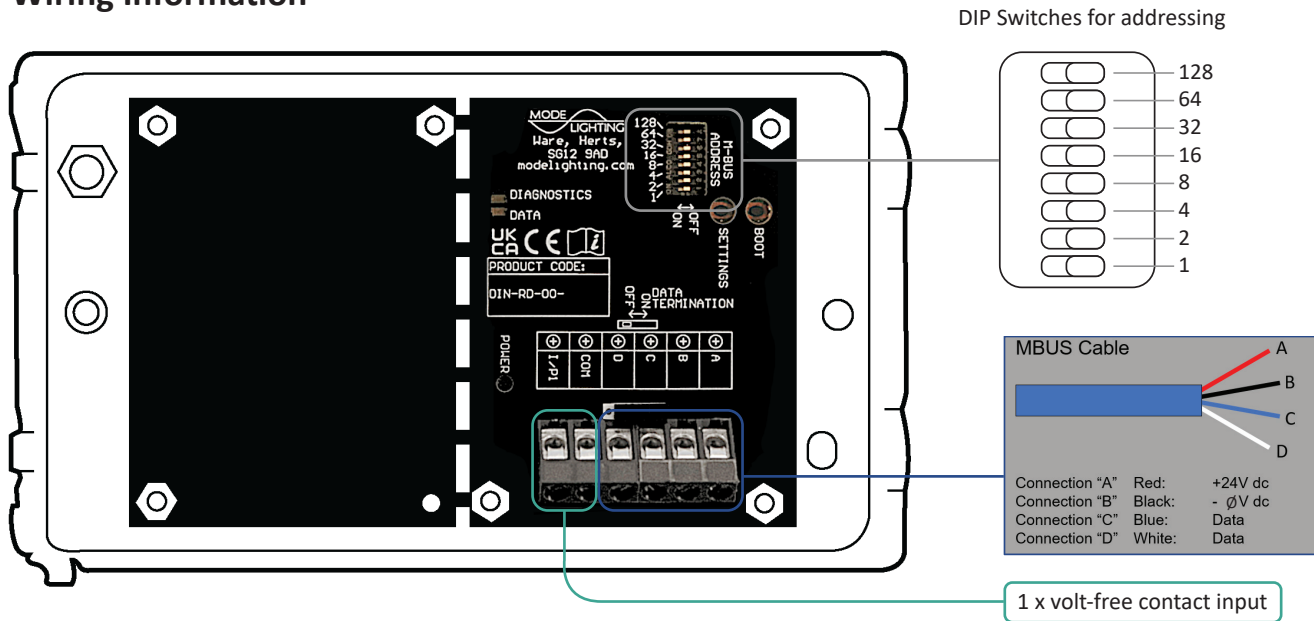
TUNEABLE WHITE



DIMMING



Wiring Information



Technical Data

Power		
Power Supply	+24V (from dataline)	
Connections & Cable Specifications		
M-BUS	Fast, flexible installation using M-BUS cable	
Inputs	1 x volt-free contact input	
Controls	Stopless rotary with push button action	
Mechanical		
	DIN-RD-00-01/02	DIN-RD-00-03/04
Dimensions	87mm High x 87mm x 35mm Deep	87mm High 147mm Wide x 35mm Deep
Fixing	Use 47mm Deep UK single gang back box	Use 47mm Deep UK double gang back box
Weight	130g	210g
Standards	EN55014, EN61547, EN61000-3-3, EN60439-1, EN60950	

Plate Finishes Available

Standard Plate Finishes



BSS – Brushed Stainless Steel



WHI – White



PBR – Polished Brass



POC – Polished Chrome



ABZ – Antique Bronze

Custom finishes and alternative plate styles available to special order

Installation should be in accordance with the relevant National Wiring Regulations and other applicable Regulations. Compliance to EC EMC and Low Voltage Directives may be invalidated if not used or installed according to the published specification.

Mode Lighting Limited reserve the right without notice to amend the technical information and specifications.



Mode Lighting Limited. The Maltings, 63 High Street, Ware, Hertfordshire, SG12 9AD. United Kingdom  
 Tel: +44 (0) 1920 462121 | Fax: +44 (0) 1920 466881 | email: [sales@modelightning.com](mailto:sales@modelightning.com) | [www.modelightning.com](http://www.modelightning.com)